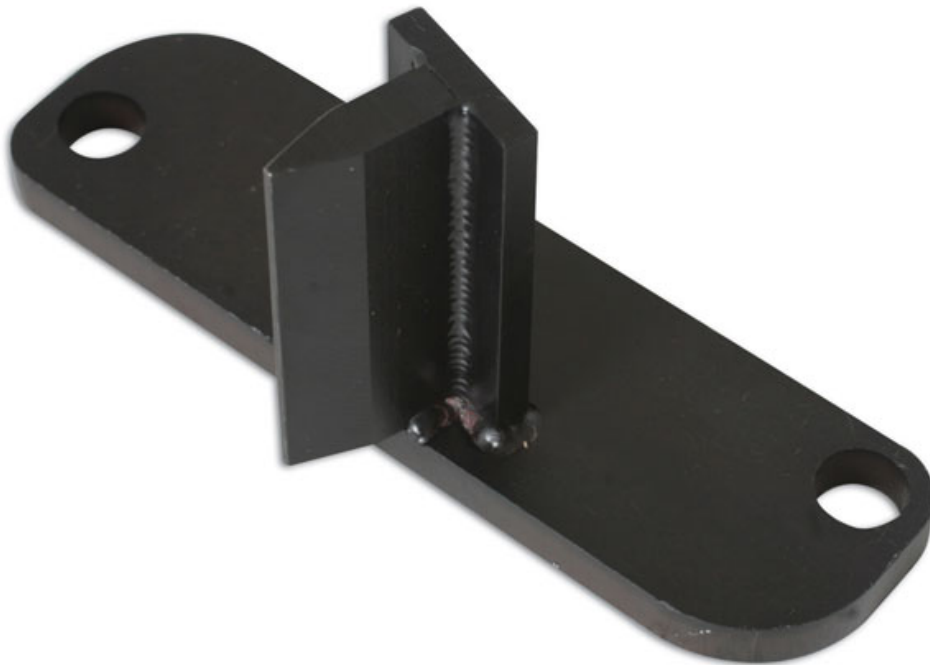




## Flywheel Locking Tool - for Rover with PG1

Designed specifically to fit 1.4 and 1.8L K16 petrol engines found in the Rover and Rover MG ranges from 1998 to 2005 (fitted with PG1 gearbox only). Allows the user to lock the engine flywheel to remove the crankshaft front pulley bolts etc. Use in accordance with OEM instructions.



### Additional Information

- Rover 218, 25, Streetwise and 45 with PG1 gearbox.
- MG ZS/ZR 1.4 and 1.8L with PG1 gearbox.
- Fitted with K16 engine 1998-2005.
- Equivalent to OEM No 18G 1742.
- Made in Sheffield.

<http://lasertools.co.uk/product/4410>



